

# RAYMAR RANCHES

OFFERING MORE THAN 100  
LONG-YEARLINGS AND  
A SELECT GROUP OF  
YEARLINGS BY THESE  
SIRES AND MORE ...

- A A R Ten X 7008 S A
- Connealy Consensus 7229
- PA Power Tool 9108
- Rito 9Q13 Of Rita 5F56 GHM
- S A V Bismarck 5682
- S A V Final Answer 0035
- S A V Mustang 9134
- S A V Potency 0641
- Sitz Upward 307R
- Connealy Forward
- GAR-EGL Protege
- G A R Predestined
- R/M Ironstone 4047
- R/M Man Up 746-09
- R/M Turning Point 1C94
- R/M Iron Mountain 1K360

OUR FALL OFFERING OF  
LONG-YEARLINGS INCLUDES  
A NUMBER OF BULLS WE HAVE  
USED IN OUR OWN PROGRAM.

*Call today for details on this  
opportunity to put one of our  
herdsires to work in your herd.*

*We have laid the groundwork  
and will make the data available  
to you for calves born in the  
spring of 2015.*

WATCH AND BID LIVE ONLINE  
**LiveAuctions. TV**



**'COMMITMENT TO PERFORMANCE' BULL SALE**  
**SATURDAY, SEPTEMBER 6**  
**ESCALON LIVESTOCK MARKET, ESCALON, CALIFORNIA**

SALE BOOKS AVAILABLE ONLINE IN AUGUST AT:  
**WWW.RAYMARRANCHES.COM**

Ray and Mary Alger ..... 209 847-0187  
Brent Alger ..... 209 988-2567  
Matt Macfarlane, Sale Manager ..... 916 803-3113  
Rick Machado, Auctioneer ..... 805 501-3210



POW of Conaga 677



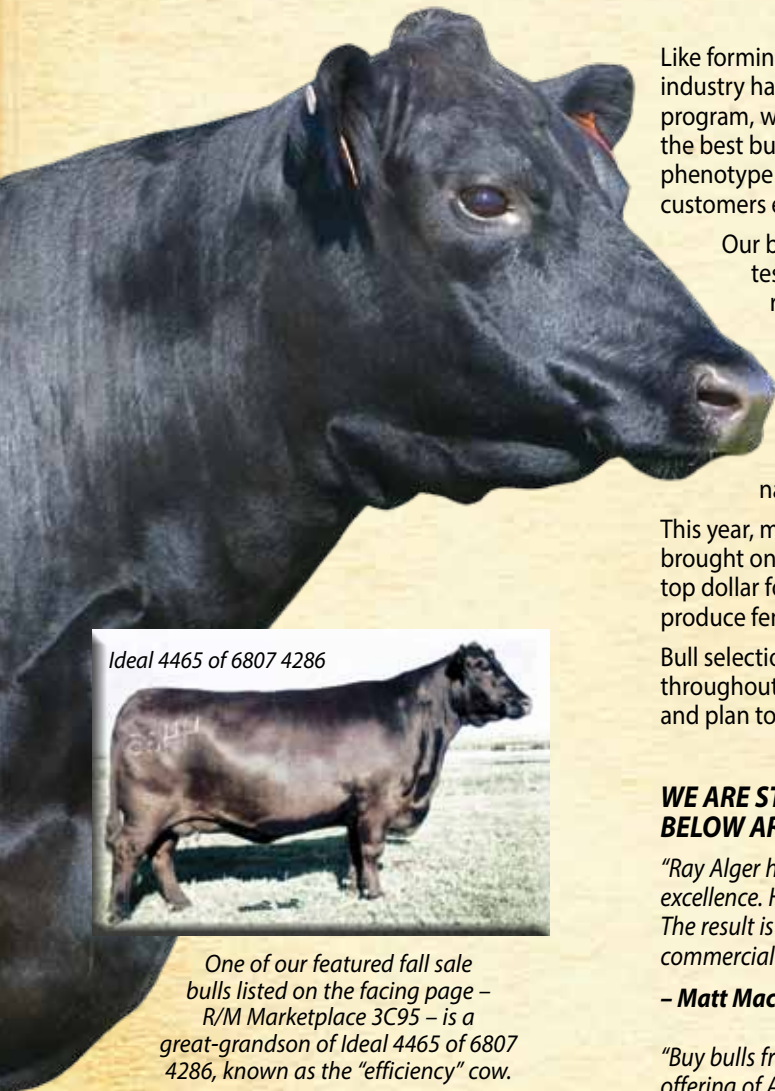
Sitz Elverelda Entense 023



GAR Expectation 822



# LOOK BEYOND THE BULL TO OUR COW POWER



Like forming an NFL Football Team, we have drafted some of the best genetics the industry has to offer over the past few decades. Through our embryo transfer (ET) program, we have mated these females (just a few of which as pictured here) with the best bulls the industry has to offer to find the perfect combination of muscling, phenotype and carcass traits to go with the athletic ability and soundness our customers expect from our bulls on sale day.

Our bulls are unique, in that they must pass the riggers of an extensive range test, where they run in working conditions throughout the spring on our ranch in the hills east of Stockton, Calif.

Those bulls that past the range test are then further developed in our own feedyard and only the "cream of the crop" is offered for sale each fall. As you know, only those that rise to the top of their game out of college make the NFL. We have taken on that same concept where we have done the work to put together an offering of bulls backed by the nation's best cow power.

This year, more than ever as producers from the West are facing tough times brought on by Mother Nature, we realize our customers will not only need to get top dollar for the steer calves out of our bulls, but they will also have a need to produce females for replacements that will go back into rebuilding the herd.

Bull selection, backed by cow power, is vital to the rebuilding of cowherds throughout California. Take a look at some of the sale features on the facing page and plan to join us Sat., September 6, in Escalon, Calif., for this outstanding offering.

Ideal 4465 of 6807 4286



One of our featured fall sale bulls listed on the facing page – R/M Marketplace 3C95 – is a great-grandson of Ideal 4465 of 6807 4286, known as the "efficiency" cow.

Marketplace 3C95 is the highest \$B in the American Angus Association database tracing back to this female posting a \$B of \$125.96 as of July 3, 2014.

## **WE ARE STRIVING TO PRODUCE THE BEST BULLS IN THE BUSINESS. BELOW ARE SOME COMMENTS ABOUT OUR PROGRAM ...**

*"Ray Alger has scoured the country and put together a donor battery filled with genetic excellence. He has mated these matriarchs to the most proven sires in the business. The result is predictable, high-quality, genetically superior cattle that any progressive commercial cattleman can afford and take advantage of."*

**– Matt Macfarlane, Matt Macfarlane Marketing, Sheridan, Calif.**

*"Buy bulls from RayMar Ranches with confidence. This year, you'll find Ray Mar's best offering of Angus bulls ever and the best family-owned ranch you will deal with. Non-pampered bulls that will get more cows bred per dollar spent. Compare the pedigrees, arithmetic and quality – you'll be sold."*

**– Bob, Becky & Jake Tiedeman, Baldridge Tiedeman Angus LLC, North Platte, Neb.**



# 75 BULLS IN THE RAYMAR RANCHES 2014 OFFERING ARE IN THE TOP 5% OF THE ANGUS BREED FOR \$B

\$B (\$Beef Value) is a multi-trait selection tool that is the \$Value Index for postweaning feedlot and carcass value. It combines \$F (\$Feedlot Value) and \$G (\$Grid Value) as a selection tool for quality, red meat yield and pounds produced. The majority of bulls in the 2014 offering have a \$B of +\$95.00 or better, which ranks them in the top 5 percent of the Angus breed.

## HERE IS A SAMPLE OF THE QUALITY OF OUR RANGE-TESTED BULLS SELLING SAT., SEPTEMBER 6, IN ESCALON, CALIF.

### R/M MARKETPLACE 3C95

Registration 17653613 • Born 2.26.2013

Sire: A A R Ten X 7008 S A

Dam's Sire: Connealy Consensus 7229

\$W	+38.56
\$F	+76.99
\$G	+51.52

BW	WW	YW	MILK	MARB	RE	FAT	\$B
+2.8	+75	+130	+34	+1.15	+98	-.004	+125.96

### R/M BULLDOZER 3J80

Registration 17672632 • Born 4.3.2013

Sire: A A R Ten X 7008 S A

Dam's Sire: TC Total 410

\$W	+39.16
\$F	+66.84
\$G	+51.36

BW	WW	YW	MILK	MARB	RE	FAT	\$B
I+2.6	I+62	I+118	I+29	+1.18	+95	+0.007	+122.38

### R/M WARRIOR 3K87

Registration 17653640 • Born 4.13.2013

Sire: A A R Ten X 7008 S A

Dam's Sire: Werner War Party 2417

\$W	+43.81
\$F	+72.25
\$G	+45.98

BW	WW	YW	MILK	MARB	RE	FAT	\$B
-1	+73	+126	+35	+86	+1.00	-.004	+118.36

### R/M OVER TIME 3F85

Registration 17653645 • Born 3.9.2013

Sire: A A R Ten X 7008 S A

Dam's Sire: G A R Predestined

\$W	+51.96
\$F	+63.98
\$G	+54.79

BW	WW	YW	MILK	MARB	RE	FAT	\$B
I+7	I+62	I+116	I+32	+1.47	+55	+0.004	+118.13

### R/M VALLEY VIEW 3F10

Registration 17653650 • Born 3.2.2013

Sire: A A R Ten X 7008 S A

Dam's Sire: Twin Valley Precision E161

\$W	+37.28
\$F	+66.29
\$G	+45.45

BW	WW	YW	MILK	MARB	RE	FAT	\$B
+1.2	+63	+118	+26	+88	+84	-.006	+115.36

### R/M TEN X 3F34

Registration 17653651 • Born 3.4.2013

Sire: A A R Ten X 7008 S A

Dam's Sire: B/R New Dimension 7127

\$W	+37.41
\$F	+47.76
\$G	+50.31

BW	WW	YW	MILK	MARB	RE	FAT	\$B
+1.2	+56	+102	+29	+1.03	+1.01	+0.005	+115.64

### R/M UP SIDE 3C72

Registration 17647776 • Born 2.25.2013

Sire: Sitz Upward 307R

Dam's Sire: R/M Foresight 8A18

\$W	+31.69
\$F	+71.51
\$G	+29.75

BW	WW	YW	MILK	MARB	RE	FAT	\$B
+3.2	+64	+122	+27	+.57	+55	+0.009	+104.79

### R/M LIGHT UP 3F04

Registration 17672796 • Born 3.8.2013

Sire: Connealy Consensus 7229

Dam's Sire: Sit Upward 307R

\$W	+40.21
\$F	+56.48
\$G	+43.69

BW	WW	YW	MILK	MARB	RE	FAT	\$B
+2.5	+68	+113	+35	+.82	+.86	-.005	+113.73

### R/M CONSENSUS 3C53

Registration 17672802 • Born 2.23.2013

Sire: Connealy Consensus 7229

Dam's Sire: Sitz Upward 307R

\$W	+40.74
\$F	+55.01
\$G	+39.89

BW	WW	YW	MILK	MARB	RE	FAT	\$B
-2	+63	+110	+32	+.81	+.64	+0.014	+106.74

### R/M CONSENSUS 3J52

Registration 17672879 • Born 4.1.2013

Sire: Connealy Consensus 7229

Dam's Sire: Connealy Onward

\$W	+51.35
\$F	+50.88
\$G	+39.10

BW	WW	YW	MILK	MARB	RE	FAT	\$B
I+2.0	I+63	I+107	I+35	+.66	+90	+0.008	+107.64

### R/M POWER TOOL 3C56

Registration 17650998 • Born 2.23.2013

Sire: P A Power Tool 9108

Dam's Sire: Sitz Upward 307R

\$W	+37.34
\$F	+52.69
\$G	+39.14

BW	WW	YW	MILK	MARB	RE	FAT	\$B
-3	+57	+106	+38	+.72	+.79	+0.025	+102.26

### R/M LIGHT HOUSE 3C97

Registration 17650994 • Born 2.27.2013

Sire: P A Power Tool 9108

Dam's Sire: Hoover Dam

\$W	+44.61
\$F	+59.28
\$G	+53.35

BW	WW	YW	MILK	MARB	RE	FAT	\$B
-5	+68	+115	+37	+1.03	+1.07	-.003	+111.35



# RAYMAR SALE BULLS WITH \$B GREATER THAN +100.00

Tattoo	Reg. No.	Name	Sire Name	Dam Tag	BW	WW	YW	MILK	CW	MARB	REA	FAT	\$W	\$F	\$G	\$B
3C95	17653613	R/M Marketplace 3C95	A A R Ten X 7008 S A	1K89	2.8	75	130	34	60	1.15	.98	-.003	38.56	76.99	51.44	125.88
3J80	17672632	R/M Bulldozer 3J80	A A R Ten X 7008 S A	9401	2.6	62	118	30	57	1.18	.95	.007	39.39	66.84	51.15	122.31
3A99	17653614	R/M Focus Out 3a99	A A R Ten X 7008 S A	1A48	3.3	66	114	25	52	1.21	.88	-.019	33.32	58.96	54.27	122.11
3K87	17653640	R/M Warrior 3K87	A A R Ten X 7008 S A	0067	-.1	73	126	35	58	.86	1.0	-.004	43.81	2.25	45.98	118.36
3F85	17653645	R/M Over Time 3F85	A A R Ten X 7008 S A	9691	.6	62	116	33	45	1.47	.55	.005	52.27	63.98	54.65	117.99
3F4	17653644	R/M Turnout 3F49	A A R Ten X 7008 S A	9691	.6	62	116	33	45	1.39	.57	.001	52.27	63.98	53.56	116.90
3F97	17653661	R/M Ten X 3F97	A A R Ten X 7008 S A	4040	1.2	56	102	26	44	1.31	.73	-.013	41.44	47.76	55.36	116.07
3K31	17653646	R/M Ten X 3K31	A A R Ten X 7008 S A	9691	.6	62	116	33	47	1.32	.54	.005	52.27	63.98	51.00	115.88
3F52	17653649	R/M Total Retail 3F52	A A R Ten X 7008 S A	R207	1.1	55	108	31	43	1.46	.58	.009	42.76	56.54	54.78	115.79
3F34	17653651	R/M Ten X 3F34	A A R Ten X 7008 S A	6E62	1.2	56	102	29	50	1.04	1.01	.006	37.41	7.76	50.18	115.52
3F06	17653489	R/M Ten X 3F06	A A R Ten X 7008 S A	1K82	2	55	111	30	61	1.04	.62	.017	28.33	60.74	42.53	115.46
3F10	17653650	R/M Valley View 3F10	A A R Ten X 7008 S A	6E74	1.2	63	118	26	55	.88	.84	-.006	37.28	66.29	45.45	115.36
3F55	17653659	R/M Ten X 3F55	A A R Ten X 7008 S A	4040	1.2	56	102	26	45	1.26	.64	-.015	41.44	47.76	53.30	115.18
3H14	17653662	R/M Ten X 3H14	A A R Ten X 7008 S A	4040	1.2	56	102	26	43	1.17	.83	-.018	41.44	47.76	54.23	114.44
3F04	17672796	R/M Light Up 3F04	Connealy Consensus 7229	1L63	2.5	68	113	35	57	.82	.86	-.007	40.21	56.48	43.90	113.95
3J4	17656372	R/M Conversion 3J41	Silveiras Conversion 8064	4062	3.4	61	115	20	57	1.03	.96	-.025	27.09	63.11	41.41	112.69
3C97	17650994	R/M Light House 3C97	PA Power Tool 9108	1C86	-.5	68	116	37	39	1.03	1.07	-.003	44.16	60.69	53.35	111.61
3A26	17653611	R/M Ten X 3a26	A A R Ten X 7008 S A	1L77	1.5	61	113	28	48	.9	.62	-.02	34.34	60.28	45.93	111.21
3A59	17653606	R/M Ten X 3a59	A A R Ten X 7008 S A	1J71	.6	56	105	28	45	1.19	.51	.004	35.37	51.85	48.52	110.36
3J04	17668046	R/M March Madness 3J04	Rito 9Q13 of Rita 5F56 GHM	6G50	2.1	52	92	22	45	.99	1.06	.024	31.15	36.53	49.08	110.09
3C04	17642560	R/M Consensus 3C04	Connealy Consensus 7229	7041	3.6	57	93	28	48	.8	.83	-.021	36.58	35.32	45.80	109.42
3F91	17672801	R/M Consensus 3F91	Connealy Consensus 7229	1C99	3.4	55	97	34	49	.85	.78	-.009	31.50	41.58	45.22	109.30
3A94	17653482	R/M Ten X 3a94 A A R	Ten X 7008 S A	1N40	.8	55	108	31	49	.96	.7	.028	32.08	56.54	42.98	108.68
3J52	17672879	R/M Consensus 3J52	Connealy Consensus 7229	639T	2	63	108	35	54	.66	.9	.007	51.13	52.25	39.19	107.95
3H45	17642573	R/M Consensus 3H45	Connealy Consensus 7229	7M64	3.3	56	97	34	41	.95	.87	-.007	41.59	41.07	49.68	107.83
3A55	17668047	R/M Rito 3a55	Rito 9Q13 of Rita 5F56 GHM	4523	3.1	51	91	19	37	.92	1.18	-.018	26.12	35.74	53.51	107.79
3C53	17672802	R/M Consensus 3C53	Connealy Consensus 7229	1A69	-.2	63	110	32	51	.81	.64	.013	40.74	55.01	40.01	106.86
3K20	17672837	R/M Consensus 3K20	Connealy Consensus 7229	9691	1.5	59	100	34	41	1.14	.48	.001	52.09	43.51	48.32	106.80
3K23	17672880	R/M Consensus 3K23	Connealy Consensus 7229	639T	2	63	108	35	57	.6	.96	.017	51.13	52.25	36.52	106.68
3K30	17672881	R/M Consensus 3K30	Connealy Consensus 7229	639T	2	63	108	35	50	.66	.9	.004	51.13	52.25	40.20	106.25
3A07	17642555	R/M Consensus 3a07	Connealy Consensus 7229	1C19	.3	62	107	32	42	.7	1.1	-.01	40.46	51.41	46.51	106.11
3C72	17647776	R/M Up Side 3C72	Sitz Upward 307R	0L35	3.2	64	122	27	64	.57	.55	.007	31.69	71.51	30.02	105.06
3J96	17653635	R/M Ten X 3J96 A A R	Ten X 7008 S A	0J25	1.8	59	108	24	42	.93	.5	-.003	34.91	54.38	44.52	104.63
3C62	17672825	R/M Consensus 3C62	Connealy Consensus 7229	9H00	1.5	52	92	25	38	1.07	.68	.004	36.01	36.53	49.55	104.61
3N28	17642587	R/M Turning Point 3N28	R/M Turning Point 1C94	R207	1	52	94	31	28	1.54	.64	.012	44.06	39.15	59.79	104.60
3H60	17797078	R/M Consensus 3H60	Connealy Consensus 7229	0604	2.5	58	103	33	46	.65	.82	-.025	41.27	48.07	42.20	104.58
3C47	17668035	R/M Side Out 3C47	Rito 9Q13 of Rita 5F56 GHM	0A23	5.7	59	103	23	46	.57	1.17	-.013	23.45	47.54	42.22	104.51
3N55	17774129	R/M SP Round Up 3N55	SandPoint Roundup X790	1199	.9	66	107	27	40	.86	1.02	.026	45.11	49.29	46.24	103.74
3A14	17672934	R/M Consensus 3a14	Connealy Consensus 7229	5E97	3	54	94	32	48	.72	.77	.007	34.72	38.14	40.45	103.69
3J50	17672862	R/M Consensus 3J50	Connealy Consensus 7229	R207	2	52	92	32	33	1.11	.72	-.005	41.87	36.53	52.37	102.65
3C56	17650998	R/M Power Tool 3C56	PA Power Tool 9108	1C87	-.3	57	107	38	46	.72	.79	.024	36.90	54.07	39.25	102.60
3F90	17749714	R/M Consensus 3F90	Connealy Consensus 7229	1A02	1.8	59	101	28	40	.89	.68	.008	36.82	44.85	45.06	102.51
3J91	17672807	R/M Consensus 3J91	Connealy Consensus 7229	0L48	.9	52	92	29	37	.93	.93	.014	37.65	36.53	48.63	102.43
3K32	17672876	R/M Consensus 3K32	Connealy Consensus 7229	657T	2.1	58	102	29	53	.5	.67	-.016	47.76	46.72	33.75	101.38
3N90	17774133	R/M SP Round Up 3N90	SandPoint Roundup X790	6D01	3.9	60	102	17	47	.73	.78	.033	30.37	45.67	38.20	101.36
3H57	17797077	R/M Consensus 3H57	Connealy Consensus 7229	0604	2.5	58	103	33	44	.61	.76	-.021	41.27	48.07	40.41	101.18
3C88	17642566	R/M Consensus 3C88	Connealy Consensus 7229	0357	1.4	59	100	19	46	.64	.65	-.01	35.02	43.51	38.73	101.13
3A01	17768709	R/M Consensus 3a01	Connealy Consensus 7229	1H43	1.9	55	99	31	35	.88	.78	-.009	34.07	44.25	48.23	101.07
3F26	17642568	R/M Man Up 3F26	R/M Man Up 746-09	4040	1.8	53	91	27	39	.74	.74	-.022	36.12	34.73	44.76	100.86
3A18	17668040	R/M Gunsmoke 3A18	9Q13 of Rita 5F56 GHM	303U	2.8	60	107	29	49	.48	.95	-.004	33.82	52.47	35.72	100.72
3J09	17659915	R/M Protégé 3J09	GAR-EGL Protege	9L83	4.1	56	107	20	43	.59	.97	.007	24.03	54.61	39.63	100.30